

tiki

Breathing face protection



A revolution in
respirator technology

MADE IN SWEDEN



Designed to make your job easier

Tiki is an innovative protective respirator manufactured in Sweden for use in challenging environments that present the need to protect against airborne particles and bacteria.

The construction sector, emergency services, the pharmaceutical industry, and laboratories are just a few examples of workplaces where the Tiki is suitable for use. The mask is certified to the highest safety class for powered air-purifying respirators (EN 12942 TM3P).

Optimal protection meets optimal comfort

The Tiki has been designed with user comfort at the fore, even during long periods of work.

Blower with variable speeds

Thanks to the pressure-sensitive sensor built into the mask, the blower's speed can be adapted to match your breathing, which results in optimal user comfort.

Ergonomic fit

The mask is available in three different sizes: small, medium and large — to fit all kinds of different faces.

Lightweight

Unlike many other protective respirators on the market, the Tiki is lightweight, weighing between just 360 - 380 grams, depending on the size.

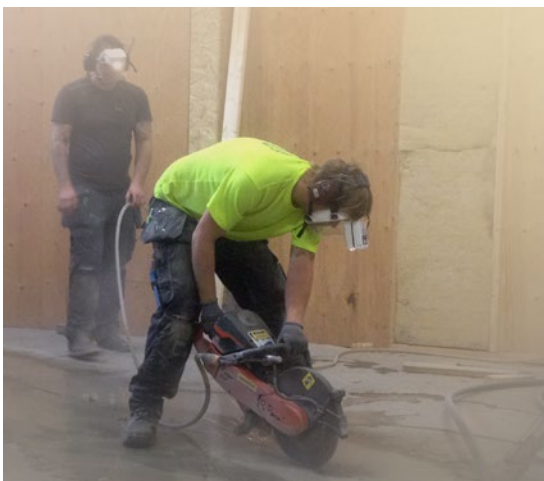
Unobstructed view

As the filter is placed in the upper part of the mask, your view is unobstructed both downwardly and at the sides. Together with its built-in LED lighting system, Tiki makes it possible to work even in dark or cramped conditions.

Facilitates communication

The mask is designed in a way that facilitates both visual and verbal communication. You can see each other's faces and you can even talk on the phone while wearing the mask.

To breathe freely and the unobstructed view are just a few advantages with Tiki

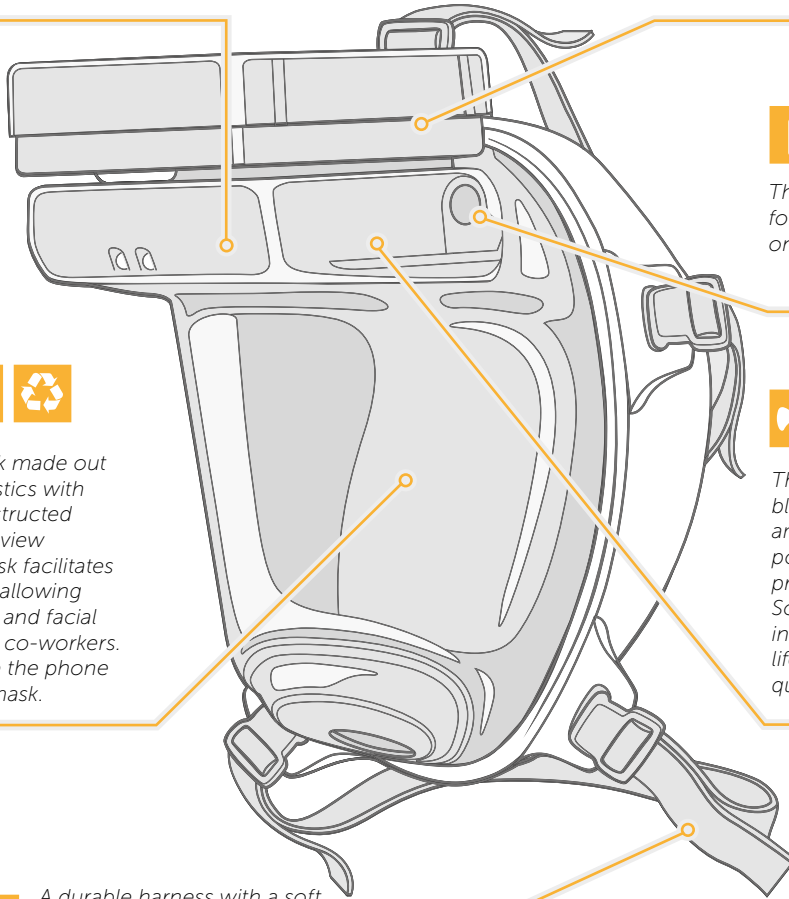




The Tiki protective respirator is powered by an internal battery with an operational time of 1–2.5 hours, depending on the load. An external battery unit is available as an accessory for those who require a longer battery life. The mask is also equipped with LED lights which facilitate work in dark conditions.



The particle filter protects against all types of particulate pollutants (P3). It's quick and easy to change the filter and mask. The filter is quadratic in shape to achieve maximal filter surface and long service life.



The external battery can run for 6–10 hours, depending on the load.



An easy to use mask made out of PET and TPE plastics with a completely unobstructed view. The excellent view provided by the mask facilitates communication by allowing you to see the eyes and facial expressions of your co-workers. It is also easy to use the phone while wearing the mask.



The blower unit regulates the blower speed following the amount of air needed to retain positive pressure within the protective respirator. Some advantages of this are increased comfort, longer battery life, and longer filter life and a quieter blower.



A durable harness with a soft and light-weight design for optimal comfort.

How does the Tiki work?

The Tiki works by ensuring positive pressure within the mask. Positive pressure is generated by a batteryoperated blower that sucks air into the mask through a purifying filter. Using a built-in pressure-sensitive sensor, the mask retains positive pressure completely in line with your breathing, which offers superior comfort compared to a traditional respirator. This kind of individual adaptation has the additional advantage of improving the service life of both the battery and the filter. The mask also has a built-in warning system which lets you know if the battery

power is too low, if the mask pressure is incorrect or if the filter is clogged or in need of a change.

Easy to use

Tiki is comprised of four components: Blower, filter, mask, and harness. The Tiki is ready to use from the moment you have fixed its easily-adjustable harness in place. The filter can be changed quickly and easily without the need for any tools. The mask itself can also be changed quickly and easily if it becomes scratched or contaminated.



Ten good reasons to choose Tiki

- Highest protection class according to European standards
- Extremely comfortable as a result of its sensor-controlled air supply
- Available in three sizes for optimum fit
- Lightweight: from only 360 grams
- Provides excellent visibility and communication
- Long battery life: up to ten hours using an external battery
- Quadratic P3 filter for optimum performance and long-lasting
- Built-in LED lighting
- It's quick and easy to change the mask and filter
- Economic: low total ownership cost



TIKI SAFETY BASIC EN - 02/2020

At tikisafety.com you'll find more info and facts about Tiki.

Think about the environment

As the mask is made of PET and TPE plastics it can be re-used, and it is manufactured using only green power from sustainable sources.

Tiki for real

Please don't hesitate to contact us if you want to know more, get a quote or try it out for real.

Call us or drop us a mail today!
+46 8-353 249 (workdays 8am–5pm GMT)
info@tikisafety.com



Tiki Safety AB
Skällstavägen 9
SE-19740 Bro
SWEDEN

+46 (0)8 353 249
info@tikisafety.com
tikisafety.com

