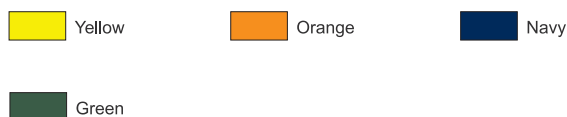




### Colourways:



## CUSTOMER INFORMATION

### Storm-Flex PU Jacket

#### Description:

Our lightweight Storm-Flex PU Jackets offer fantastic foul weather protection without a reduction in breathability – ideal if you're performing manual tasks in the great outdoors.

- Conforms to EN471 Class 3:2 (Yellow/Orange Versions Only)
- Conforms to EN 343 Class 3:2
- Conforms to GO/RT 3279 (Orange Version Only)
- 2 band & brace
- Breathable
- Heavy duty zip front fastening
- Snap button fastening front

#### Fabric:

- PU coated polyester tricot fabric

#### Applications:

Tasks with a high visibility requirement - traffic, security, event marshalling, driving, construction, roadworks, wet weather tasks. Rail/Underground (Orange Only)

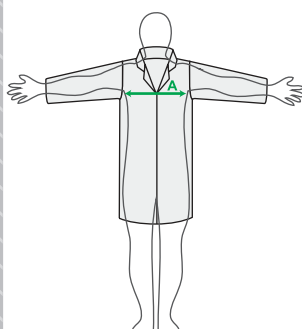
#### Product Codes:

|         |         |                                 |
|---------|---------|---------------------------------|
| 18241-7 | S - 4XL | HV Stormflex With Tape - Yellow |
| 18941-7 | S - 4XL | Stormflex - Yellow              |
| 18211-7 | S - 4XL | Stormflex With Tape - Navy      |
| 18911-7 | S - 4XL | Stormflex - Navy                |
| 18231-7 | S - 4XL | Stormflex With Tape - Green     |
| 18931-7 | S - 4XL | Stormflex - Green               |
| 18281-7 | S - 4XL | HV Stormflex With Tape - Orange |

### Standards:



EC council directive 89/686/EEC  
 BS EN 471:2003+A1:2007 - High Visibility Warning Clothing for Professional Use  
 GO/RT 3279:2008 - Rail Industry Standard  
 BS EN 343:2003+A1:2007 - Protection Against Rain

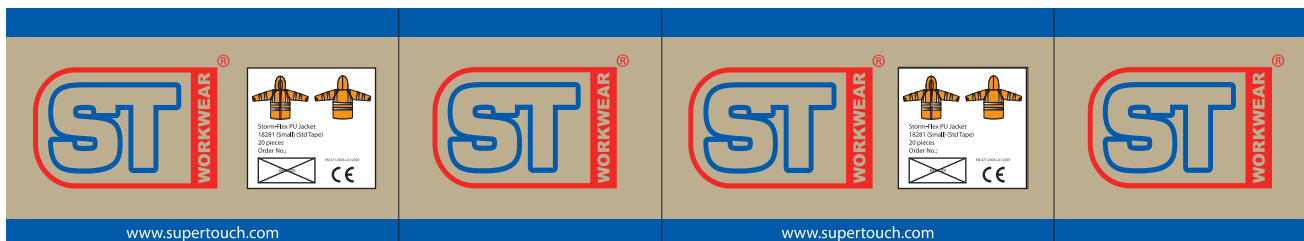


### Size Chart:

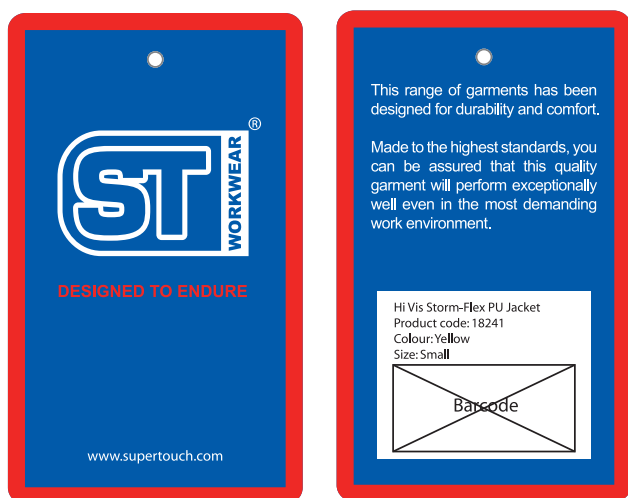
| Measurements in cm | S     | M       | L       | XL      | 2XL     | 3XL     | 4XL     |
|--------------------|-------|---------|---------|---------|---------|---------|---------|
| To fit (A)         | 92-96 | 100-104 | 106-112 | 116-122 | 124-132 | 136-144 | 148-152 |

**Packaging:** 1 piece per bag - 20 bags per case

**Outer Carton Artwork:**



**Inner Artwork:**



**Feature Symbols:**



Product can be washed 25 times



Product aids moisture management



Product features welded seams



Product packed in retail bags

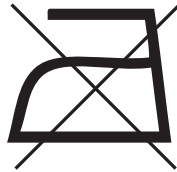
**Washcare Symbols:**



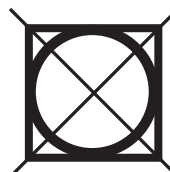
Wash cycle



Do not bleach



Do not iron



Do not tumble dry



Do not dry clean with white spirit

The information shown on this specification sheet is intended as a guide and is advisory only. All details were correct at the time of issue. As conditions of use are ultimately beyond our control, we advise that the product is tested for the particular application before use.