

# Burstable Pouch Sterile Session Wipes

A complete range of sterile sporicidal and biocidal wipes in a session wipe.

Pouch compartments maintain wipe and product efficacy for full shelf life, segregating the chemistry and wipes until point of use.



### Features

- Fully validated formulations
- <1 minutes activation time
- In-use shelf-life of 4 hours
- Session Wipe format minimises waste
- Any combination of AN, QT, OX and HA are ideal rotational partners
- Manufactured to GMP
- Multiple bags for cleanroom transfer
- The solution is filtered through a 0.2-micron filter and aseptically filled into a pre-gamma irradiated packaging (25-45 kGy) and tested to give a sterility assurance level SAL of 10<sup>-6</sup>

### Instructions for Use

Remove the pouch from the outer bag through normal material transfer process. Place the InSpec Burstable Wipe on a hard surface and roll-up the pouch/liquid compartment, applying downward pressure to burst the liquid through the internal seal. Leave for 1 minute to saturate the wipes. Open the foil pouch to gain access to the wipes. Use a recommended wiping technique to clean and disinfect the surfaces.

### Material Compatibility

Application of solutions, when used as directed, will not affect materials normally encountered in the cleanroom. See compatibility information in the Technical File.

### Safe Handling and Storage Information

Always read the label and Safety Data Sheet (SDS) before use.

Store in original packaging away from sunlight and extremes of temperature. Full guidance on the handling and disposal of this product is available in the SDS.

### Wipe Material Specification

Feature	Pouch Wipes
Composition	55% cellulose 45% polyester
Basis Weight	68 gsm
Thickness	0.3 mm
Absorption Capacity	288 mL/m <sup>2</sup>
Absorption Time	0.8 s
APC (AirParticle Count)	5.74 x 10 <sup>3</sup> counts/m <sup>2</sup> /cfm
LPC (Liquid Particle Count)	82.42 x 10 <sup>6</sup> counts/m <sup>2</sup>
Organics, FTIR	No Silicon, Oil, Amide or DOP detected
Non-volatile Residue NVR, in DI water	0.091 mg/g
Non-volatile Residue NVR, in IPA	0.431 mg/g
Ion Content- Chloride (Cl)	0.0012 mg/g
Ion Content-Sodium (Na)	No detection
Ion Content-Potassium (K)	No detection
Ion Content-Magnesium (Mg)	0.0500 mg/g
Ion Content-Calcium (Ca)	0.0660 mg/g

### Chemistry

The InSpec Burstable Wipes are available with a range of InSpec solutions inside:

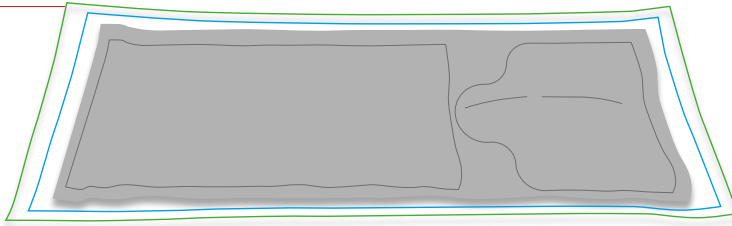
Broad-spectrum disinfectants: **QT** and **AN** - providing both bactericidal and fungicidal efficacy for daily use.

Sporicidal disinfectants: **HA** and **OX** - providing sporicidal efficacy.

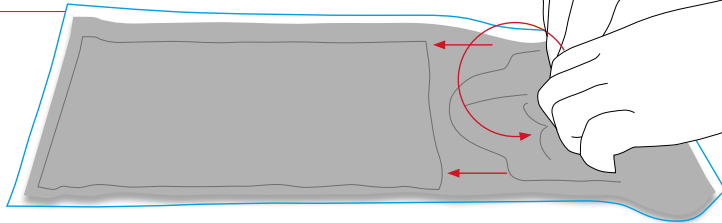
### InSpec Burstable Wipes

Product	Pack Size	Case Size	Product Code
<b>InSpec® HA Wipes</b>	15 wipes/pouch	20 pouch	HAPW50BP15S
<b>InSpec® OX Wipes</b>	15 wipes/pouch	20 pouch	OXPW40BP15S
<b>InSpec® AN Wipes</b>	15 wipes/pouch	20 pouch	ANWF120BP15S
<b>InSpec® QT Wipes</b>	15 wipes/pouch	20 pouch	QTWF130BP15S

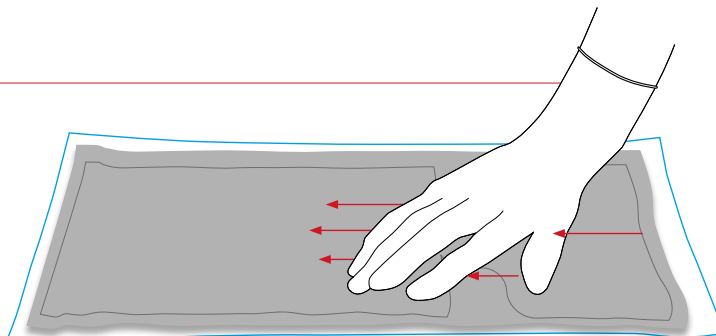
- 1 Ensure the pouch is free from defects and is placed on a hard flat surface. Remove all but one outer bag.



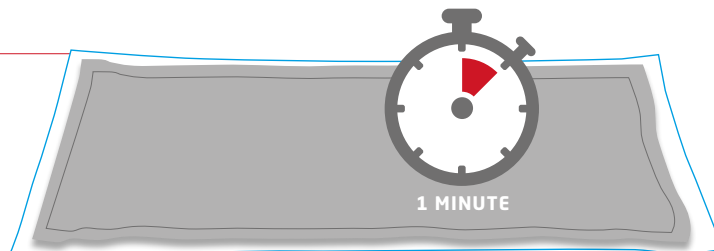
- 2 With a single outer bag remaining, roll the pouch from the liquid end and apply pressure to force the liquid across the frangible barrier to wet the wipes/mop.



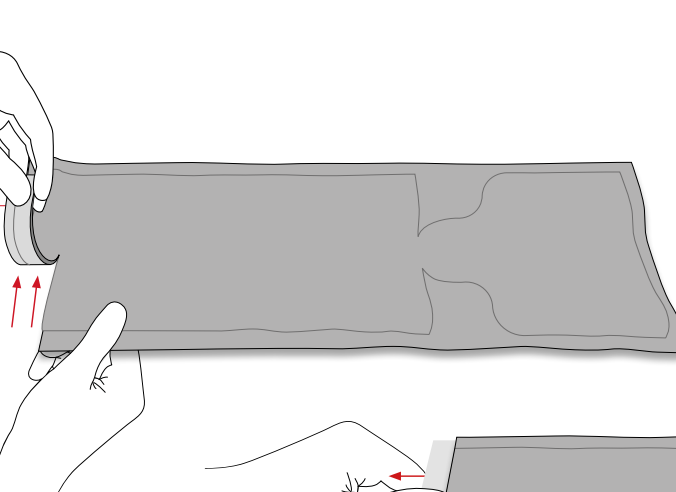
- 3 Ensure liquid is fully transferred to the wipe/mop section.



- 4 Wait for 1 minute, then remove the clear outer bag ensuring there is no damage or leak present.



- 5 To access the wipes/mop, tear open the pouch at the impregnated product end.



- 6 Use within 4 hrs of bursting.

